



1 Gilpin Close Chichester PO19 3QW



2



2



1

EPC D

- Detached bungalow
- Two/three bedrooms
- Bathroom
- No forward chain
- 1075sqft or 99.9sqm (including garage)
- Conservatory
- West facing rear garden
- Cloakroom

A three-bedroom detached bungalow, constructed in the early 1970s by local developer DG Phillips.

The third bedroom would equally work as a dining room as it has a conservatory leading from it. The kitchen is a good size and there is a spacious sitting room with a fireplace.

The photovoltaic paneling on the roof provides free electricity.



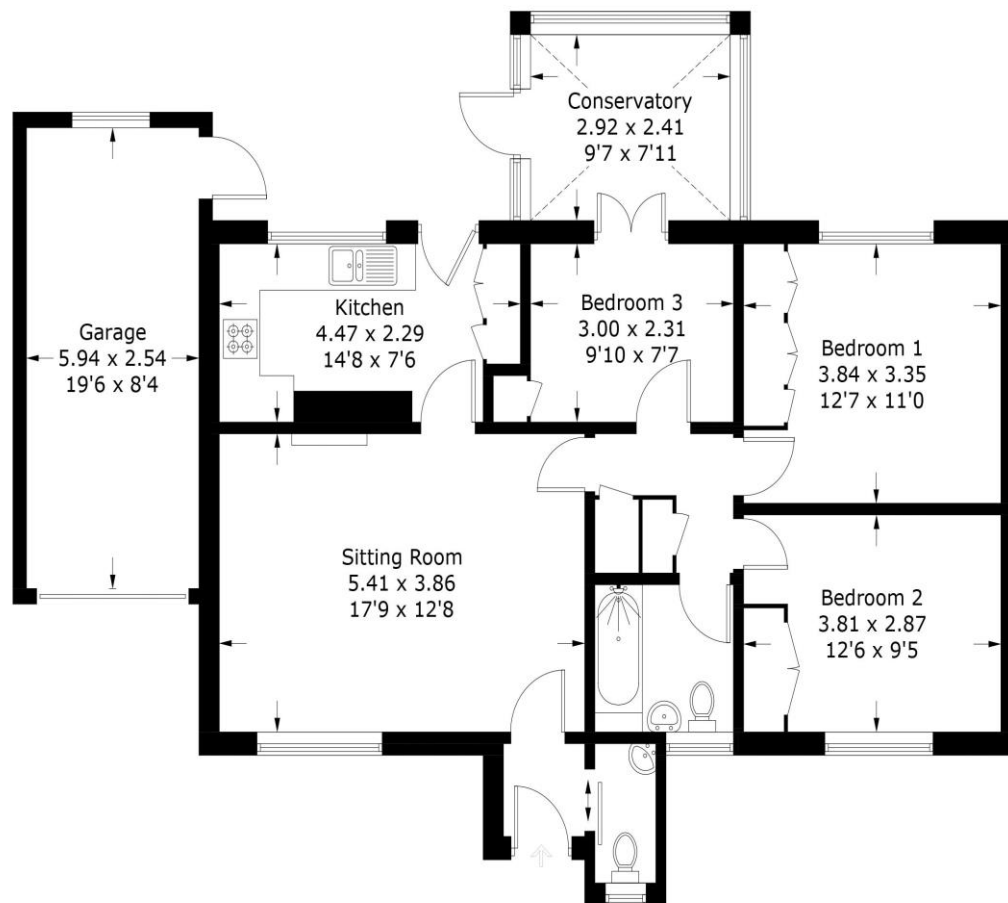


1 Gilpin Close, Fishbourne, PO19 3QW

Approximate Gross Internal Area = 84.7 sq m / 912 sq ft

Garage = 15.2 sq m / 164 sq ft

Total = 99.9 sq m / 1076 sq ft



These plans are for representation purposes only as defined by RICS - Code of Measuring Practice. Not to Scale. (ID602856)

K340 Printed by Ravensworth 01670 713330



56 West Street, Chichester, West Sussex, PO19 1RR
01243 216888
hello@kentonbudd.com

Kenton Budd Estate Agents wish to advise prospective purchasers that we have not checked the services or appliances. The sales particulars have been prepared as a guide only; any floor-plan or map is for illustrative purposes only. Kenton Budd Estate Agents, for themselves and for the vendors or lessors of this property whose agents they are give notice that: the particulars have been produced in good faith; do not constitute any part of a contract; no person in the employment of Kenton Budd Estate Agents has any authority to make or give any representation of warranty in relation to this property.